

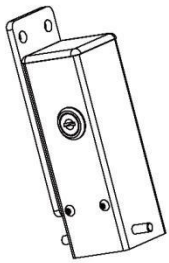
# Electric lock

## user manual

### 1. Technical data:

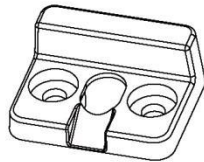
Operating voltage	DC24V
Operating current	1.78A
Pulse to open lock	3 sec
Working theory	Pulse to open
Bolt pin dimeter	16mm
Working temperature	-35° C-+80° C
Dimension	168x50x55m

### 2. Product overview:



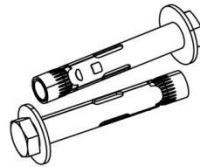
Lock body

①



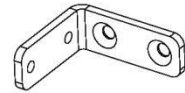
Anti-thrust stopper

②



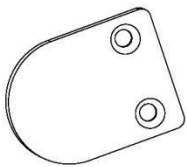
Expansion bolt

③



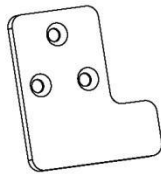
Lock auxiliary  
fix bracket

④



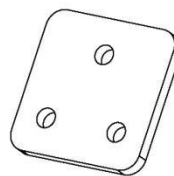
Gate auxiliary  
stopper 1

⑤



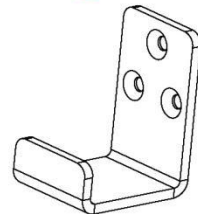
Gate auxiliary  
stopper 2

⑥



Cushion lock

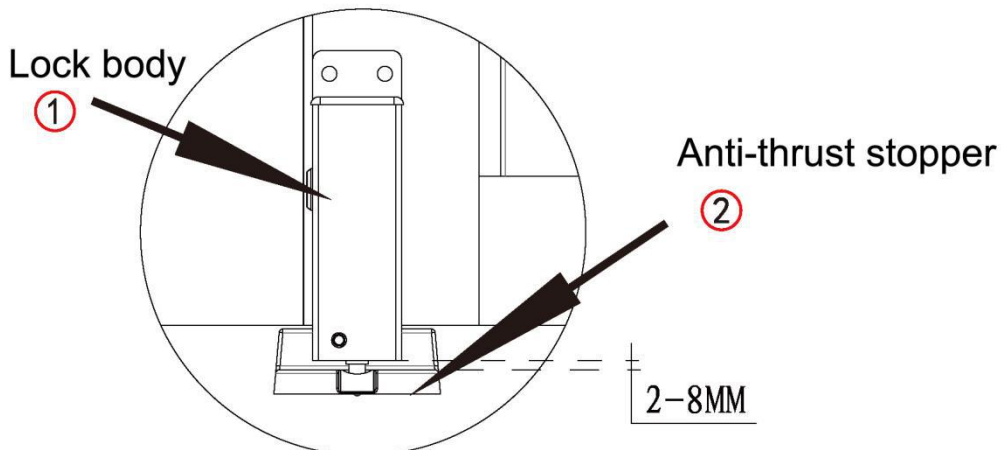
⑦



Gate auxiliary  
stopper 3

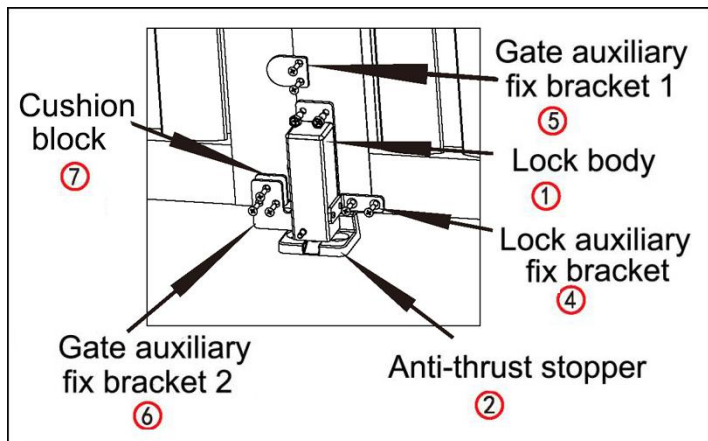
⑧

### 3. Installaion:

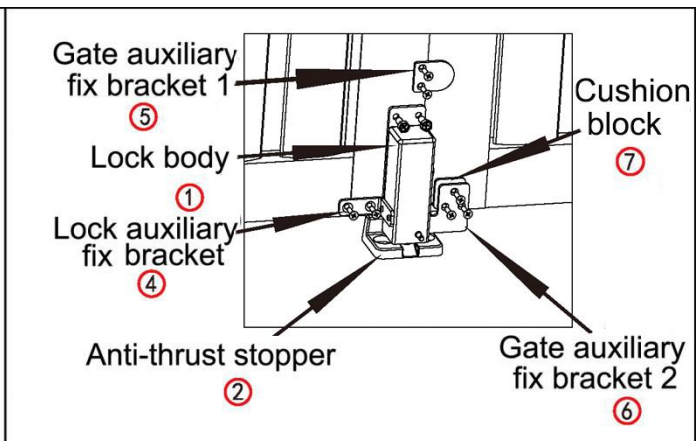


## 4. Multiple scenarios installation diagram:

### 4.1. Use for double swing gate ---pull to open

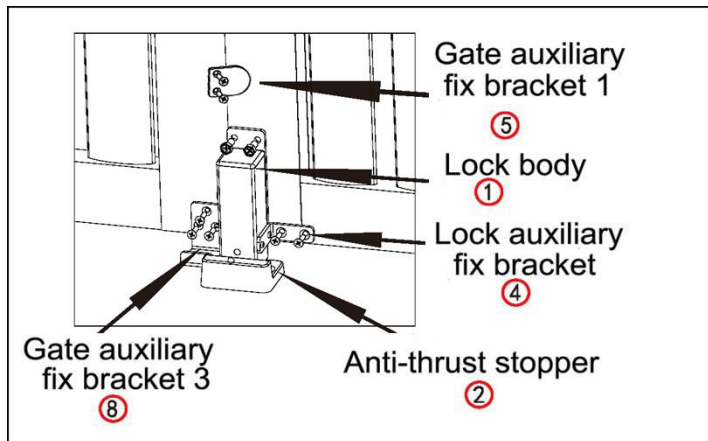


Install at right side

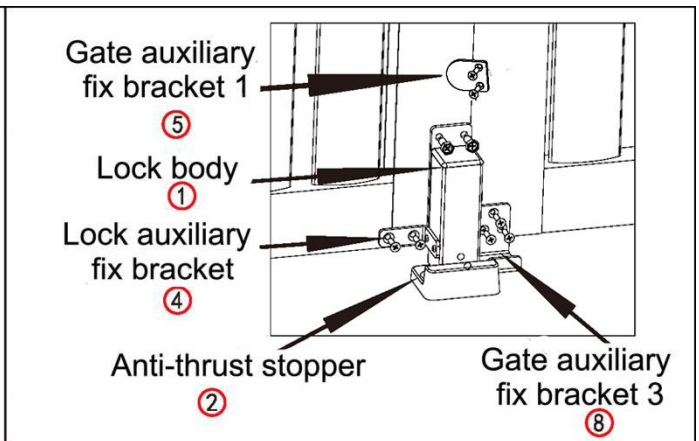


Install at left side

### 4.2. Use for double swing gate ---push to open

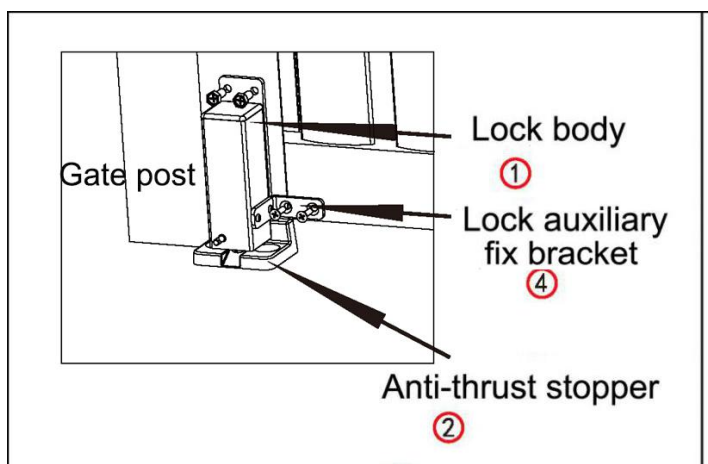


Install at right side

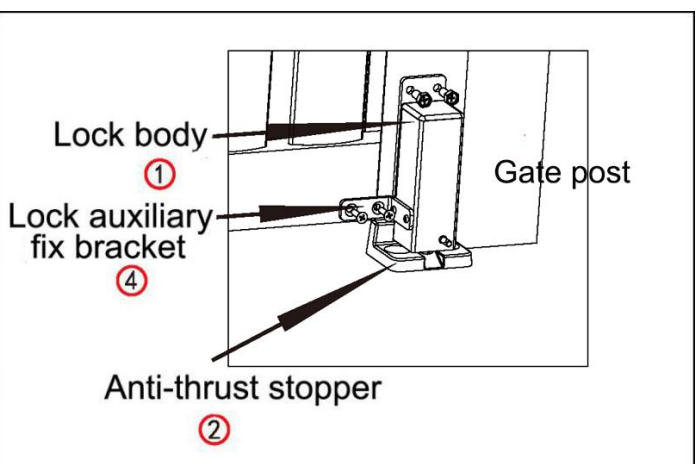


Install at left side

### 4.3. Use for single gate ---pull to open

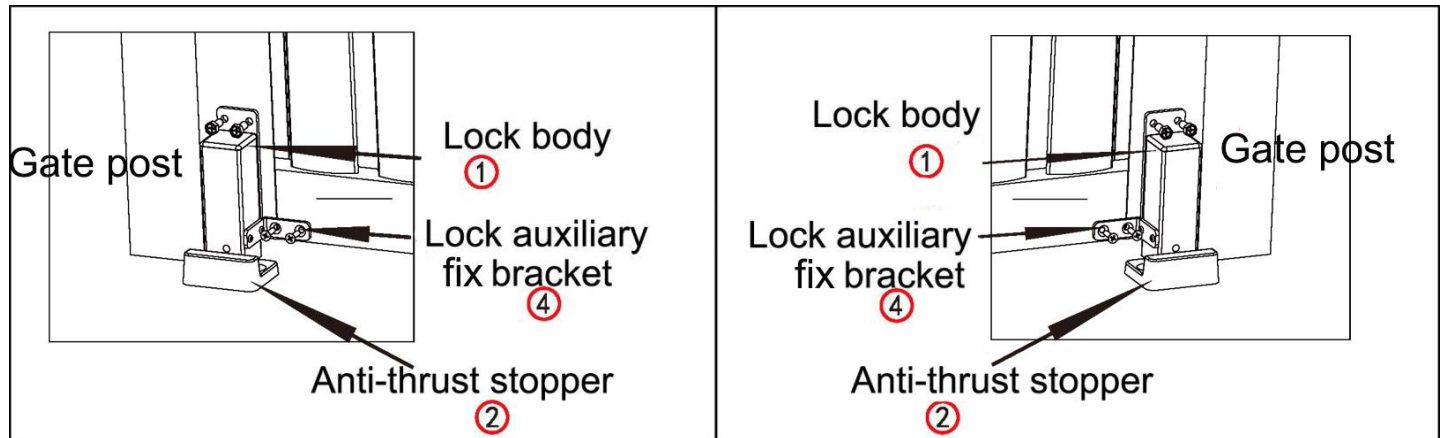


Install at right side



Install at left side

#### 4.4. Use for single gate ---push to open

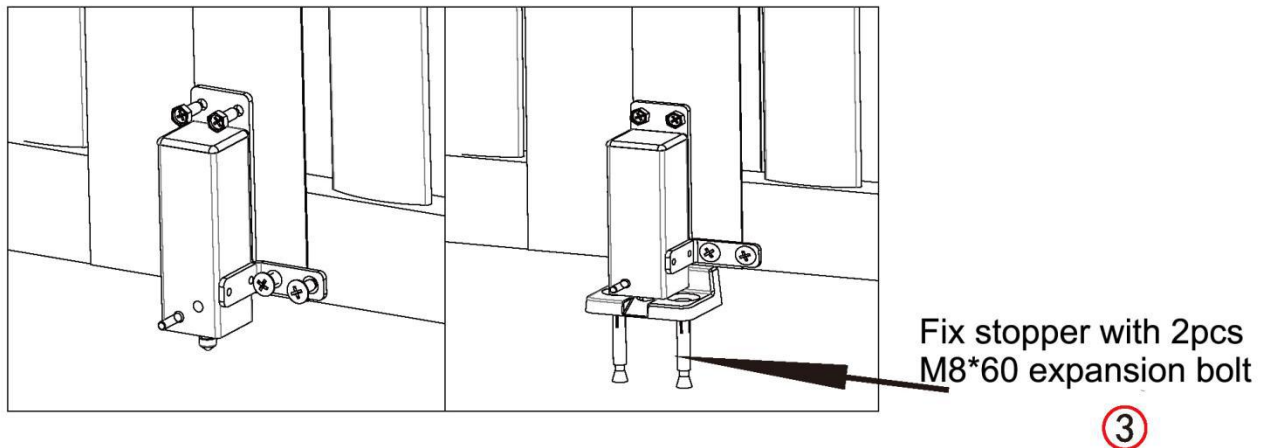


Install at right side

Install at left side

**Attention:** Motor 2 must install on the gate which the one lock installed.

#### 5. Installation stopper diagram:



- Fix the lock body to the gate (inside property) with screws.
- When the gate is closed, the top of anti-thrust stopper must be placed on the BACK side of the lock body. The center hole of the stopper must be aligned with the center axis of the lock body. And make sure the spring contact pin of the lock can always touch the top area of the stopper. Then fix the stopper with expansion bolts to the 2 side holes.

#### **Attention:**

When installing, Always need to make sure the spring contact pin of the lock must be able to touch the top area of the anti-thrust stopper. Otherwise, the lock bolt can not fall down to the center hole. Always place the anti-thrust stopper with the bottom plate in the gate closing direction side. The installation method is the same for left and right installation.